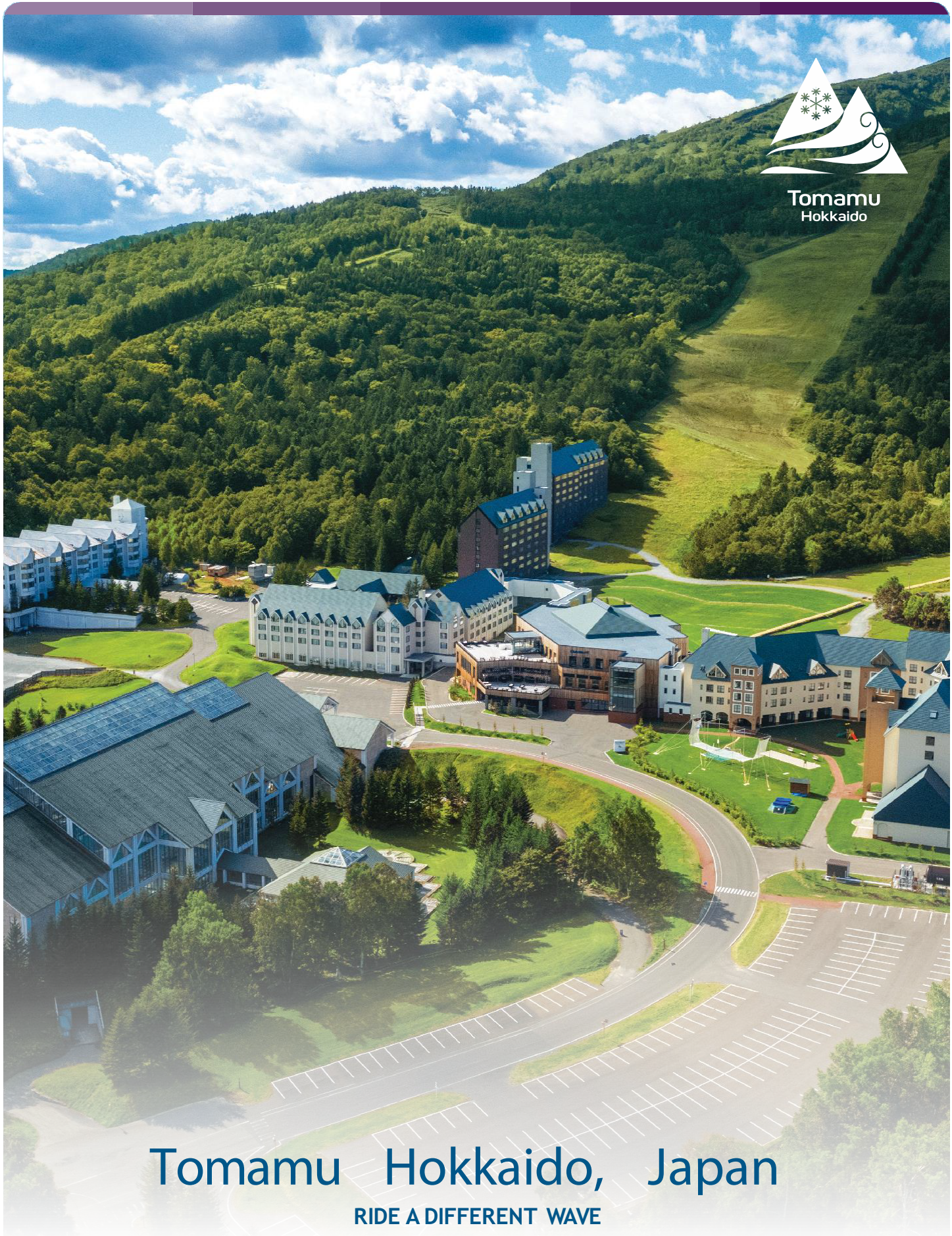


**Club Med**   
amazing you



**Tomamu**  
Hokkaido



**Tomamu Hokkaido, Japan**

**RIDE A DIFFERENT WAVE**



### WHAT'S INCLUDED AND SO MUCH MORE!



SPORTS



GOURMET DINING



OPEN BAR



KIDS' CLUB



WELLNESS



ENTERTAINMENT



ACCOMMODATION

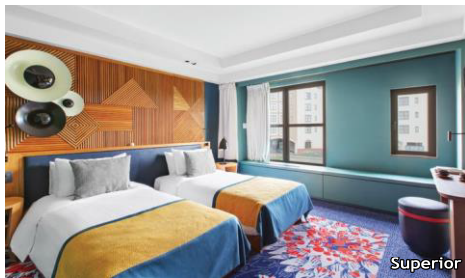
#### Recipe For Happiness

- ↳ Children's Club (4-17 years)
- ↳ Two choices of restaurants (main and specialty restaurants)
- ↳ Two choices of bars (main bar and adult-only Zen bar)
- ↳ Access to the biggest indoor wave pool in Japan

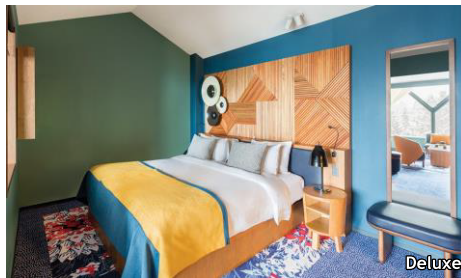
#### Choose The Perfect Room

##### Standard Amenities For All Accommodation

Air-conditioning/heating system, Coffee & Tea kit, umbrella, security safe, Japanese electrical sockets (100-127 volts), hair dryer, ironing kit, magnifying mirror, Wi-Fi access



Superior



Deluxe



Suite

##### Accommodation

38-42 m<sup>2</sup>

##### Accommodation

38 m<sup>2</sup>

##### Accommodation

55-72 m<sup>2</sup>

#### For Kids



##### Children's Clubs

- ↳ Mini Club Med (4-10 years)
- ↳ Club Med Passworld (11-17 years)

##### Club Med Amazing Family Programme

##### Children's Services

- ↳ Club Med Baby Welcome (0-23 months)
- ↳ Baby Corner (4-23 months)

#### Sports & Activities



- ↳ Archery School
- ↳ Bocce Ball
- ↳ Cardio Training Room
- ↳ Fitness School
- ↳ Flying Trapeze with Circus Activities
- ↳ Hiking
- ↳ Indoor Swimming
- ↳ Mountain Biking
- ↳ Nature Walk
- ↳ Table Tennis
- ↳ Tennis School
- ↳ Walking
- ↳ Yoga

#### Additional Services\*

- ↳ Petit Club Med (2-3 years)
- ↳ Pyjamas Club (2-8 years)
- ↳ Club Med Boutique
- ↳ Excursions
- ↳ Cooking Lessons
- ↳ Golf School
- ↳ Whitewater Rafting

#### Flight & Transfer

- ↳ Club Med offers you the option to include flights and transfers with the best airlines at the best price\*

#### Arrival

- ↳ Tokachi-Obihiro Airport (75 min)
- ↳ Chitose-Sapporo Airport (90 min)
- ↳ Tomamu Train Station (10 min)

\* At extra cost

must-try Experiences

Colours of Hokkaido\*

Unkai Terrace\*

Flavours Of Hokkaido

Family Nature Walk

Mountain Biking

### M.S. STAR TRAVEL AGENCIES SDN BHD (155421-A) KKKP0359

#### KUALA LUMPUR

Wisma Star Travel, No 42-44, Jalan Raja Abdullah, 50300 KL  
Tel: +603 2786 7555  
Mobile: 017 504 7177 Email: tours@startravel.com.my

#### PENANG

48, Leith Street, 10200 Penang  
Tel: +603 2786 7575  
Email: penang@startravel.com.my

star  travel  
www.startravel.com.my

fb.com/startravelsb