

TRIP START DATES

2023	2024
APR 09, 16, 23, 30	APR 07, 14, 21, 28
MAY 07, 14, 21, 28	MAY 05, 12, 19, 26
JUN 04, 11, 18, 25	JUN 02, 09, 16, 23, 30
JUL 02, 09, 16, 23, 30	JUL 07, 14, 21, 28
AUG 06, 13, 20, 27	AUG 04, 11, 18, 25
SEP 03, 10, 17, 24	SEP 01, 08, 15, 22

For full dates and prices, and to choose your group size, visit insightvacations.com/ireelegance

↗ COUNTRY ROADS
ACTIVITY LEVEL: LEISURELY

8 DAYS
1 COUNTRY
11 MEALS
14 INCLUDED EXPERIENCES

feefo 4.7 /5
GUEST REVIEW ★★★★★

MAKE TRAVEL MATTER

Ring of Kerry: Visit a local seaweed farm striving to protect the fragile ecosystem of the wild Atlantic Irish coasts.

INSIGHT EXPERIENCE

Dublin: Visit Trinity College, before marvelling at the ancient Book of Kells, created by monks and dating from A.D. 800.

INSIGHT CHOICE

Connemara National Park: Choose to visit the turreted Neo-Gothic Kylemore Abbey. Alternatively, taste the unique flavours of Connemara oysters and learn about the farm's sustainability initiatives in an enlightening MAKE TRAVEL MATTER Experience.

Choose between two experiences in Blarney.

AUTHENTIC DINING

Ashford Castle: Dine on delicious farm-to-table fare in a stylish setting at Ashford Castle's iconic George V Dining Room.

Welcome Dinner in Dublin.

TOP RATED HIGHLIGHTS

Travel by Ferry across Shannon Estuary
• Be escorted by a lone piper across the drawbridge at Ashford Castle.

Visit Cliffs of Moher • Ring of Kerry • Galway Cathedral.

See Guinness Storehouse, Dublin Castle and O'Connell Street in Dublin • Killarney • Cong Abbey.

IRISH ELEGANCE

"Meeting the piper at Ashford Castle is always a hit with guests. You'll walk across a bridge to the castle, behind the lone piper, who is playing just for you. It's a spine-tingling experience!"

– Erica, Travel Director



AUTHENTIC DINING, ASHFORD CASTLE



TRINITY COLLEGE, DUBLIN



DAY 1 IN DUBLIN'S FAIR CITY

Welcome to Dublin. On arrival at Dublin airport, your airport transfer shuttle service leaves for your hotel at 08:30, 11:00 and 13:00. Meet your Travel Director at 14:00 for an orientation tour with a Local Expert that brings to life Dublin's architectural treasures and history, stretching back more than 1,000 years. Travel along the River Liffey, see Custom House, Guinness Storehouse, Christchurch Cathedral and St. Patrick's Cathedral. See the 9th century Book of Kells and enjoy a walk through the cobbled courtyards of Trinity College.

Back at your hotel, join your Travel Director for a warm and friendly Welcome Dinner with drinks and the opportunity to mingle and get to know each other over a pleasant evening of dinner and wine. (DW)

Clayton Hotel Burlington Road, Dublin.

DAY 2 CASHEL AND BLARNEY, HEADING FOR KILLARNEY

Depart Dublin, and pass the famous Curragh Racecourse and green meadows where many of the finest Irish racehorses are bred. Explore Blarney with Insight Choice. Choose to visit Blarney Castle and kiss the magical stone to ensure a lifetime of eloquence. Alternatively, meet a senior gardener for a tour of Blarney Gardens. Head to Killarney, where you may fancy a 'pint of porter.' This town on the lakes is famous for its lively pubs so in the evening why not join in the 'craic'? (B) (DW)

Killarney Plaza Hotel and Spa.

DAY 3 RING OF KERRY EXPERIENCE

Relaxed Start. In the morning, marvel at spectacular mountain and sea views as you travel the road that winds around the beautiful Iveragh Peninsula, better known as the Ring of Kerry. Meet John for a MAKE TRAVEL MATTER * Experience as you visit his family-run seaweed farm to learn about sustainable farming practices that protect the wild Irish Atlantic coasts. (B)

DAY 4 THE CLIFFS OF MOHER AND ON TO GALWAY

Cross the Shannon Estuary by ferry and enter County Clare. Stop at the Exhibition Centre and enjoy a walk along the Cliffs of Moher, raised approximately 700 feet above the pounding Atlantic waves. Then travel north across the Burren, a suddenly stark and barren landscape, scarred with interesting limestone creases. Journey to Galway, the City of the Tribes, and visit the lovely cathedral. Take in the scenery from your hotel, which is spectacularly set on the shores of Galway Bay. (B) (DW)

Connemara Coast Hotel, Galway.

DAY 5 CAPTIVATING CONNEMARA

Relaxed Start. Embark on a superb exploration of the Connemara National Park and see a wonderland of rivers, lakes and silent hills. Explore Connemara with Insight Choice. Choose to visit the magnificent, turreted Neo-Gothic Kylemore Abbey. Alternatively join a MAKE TRAVEL MATTER * Experience and visit one of Ireland's oldest oyster farms for a tasting. Learn about their commitment to biodiversity and work promoting sustainable packaging. (B)

DAY 6 MAJESTIC ASHFORD CASTLE

Relaxed Start. Sitting on the edge of Lough Corrib and nestled on the border of County Galway and County Mayo, is the delightful Cong. You may recognise much of the town as it was used as the location in the 1952 film, 'The Quiet Man.' With free time to explore this quintessential Irish village, see the statue of the lead characters played by John Wayne and Maureen O'Hara, and the ruins of the Medieval Cong Abbey.

Then a short drive down the road leads you to Ashford Castle, the highlight of your travels. As you arrive a lone piper escorts you over the drawbridge. Your exquisite hotel provides a romantic backdrop in superior surroundings, offering both relaxation and comfort. There are many opportunities to explore the vast estate, pamper yourself at the spa, or get to know the hawks and woodland surroundings at the hotel's falconry school.

Dining at Ashford Castle ranks among the finest culinary experiences in the world. Creative cooking, locally sourced ingredients and an innovative menu await at your Celebration Dinner. Gentlemen, a jacket is required. (B) (DW)

Ashford Castle, Cong.

DAY 7 ACROSS THE EMERALD ISLE TO DUBLIN


Relaxed Start. Enjoy a leisurely breakfast in the morning and perhaps a stroll on the estate? Then cross the midlands to Dublin where the rest of the day is free for independent activities and maybe some last minute shopping. (B)

Clayton Hotel Burlington Road, Dublin.

DAY 8 DEPART DUBLIN

Your journey comes to an end after breakfast. Departure transfers arrive at Dublin airport at 07:00, 09:00 and 10:30. (B)



 **INSIGHT CHOICE** Visit Kylemore Abbey with your Local Expert. (Photo by @Toneill70, Day 5, Connemara)



TOP RATED HIGHLIGHT Explore Connemara National Park, a wonderland of lakes and silent hills. (Day 5, Connemara)

KEY

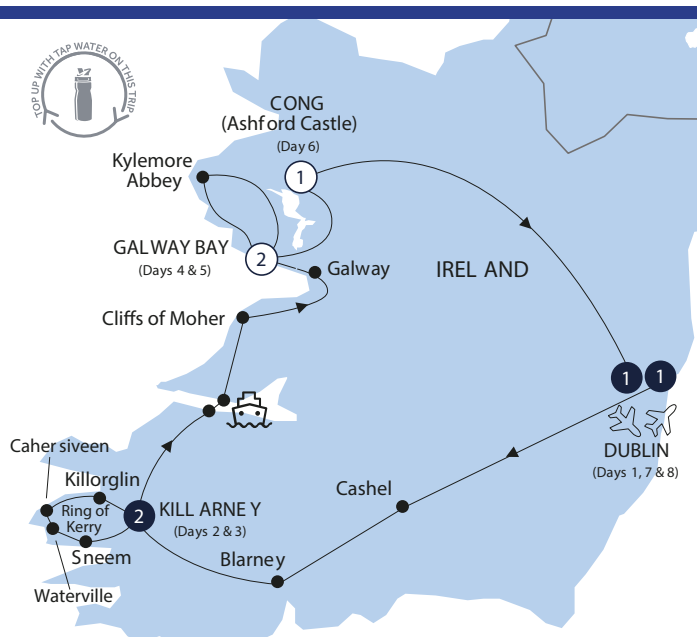
 Join/Leave Options

1 Central Hotels + Nights

1 Scenic Hotels + Nights

● Place Visited

 Cruise

**CHOOSE YOUR GROUP SIZE**

This trip operates both classic and small group departures. You can also book your own private group with as few as 12 travellers.



Use the camera on your smart phone to view the full details of this trip on our website.